

# Network Video Recorder

## NVR502-B-P-IQ Series



### Features

- Support Ultra 265/H.265/H.264 video formats
- 8/16/32-channel input
- Plug & Play with 8/16 independent PoE network interfaces
- Support mainstream cameras of ONVIF conformance(Profile S, Profile G, Profile T ) and RTSP protocols
- Support 1-ch HDMI, 1-ch VGA. HDMI up to 4K (3840x2160) resolution
- VGA and HDMI independent output
- Up to 16 Megapixels resolution recording
- ANR technology to enhance the storage reliability when the network is disconnected
- Support cloud upgrade

### Specifications

Decoding	Description
Decoding Format	Ultra 265, H.265, H.264
Decoding Capability	NVR502-08B-P8-IQ:Smart Off: 2 x 16MP@30, 2 x 12MP@30, 4 x 4K@30, 8 x 4MP@30, 8 x 3MP@30, 8 x 1080P@30 Smart On: 2 x 12MP@30, 2 x 4K@30, 6 x 4MP@30, 8 x 3MP@30, 8 x 1080P@30 NVR502-16B-P16-IQ:Smart Off: 2 x 16MP@30, 2 x 12MP@30, 4 x 4K@30, 8 x 4MP@30, 10 x 3MP@30, 16 x 1080P@30

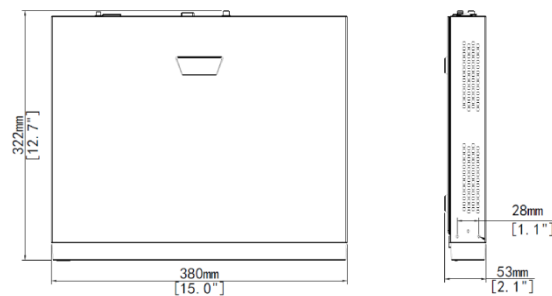
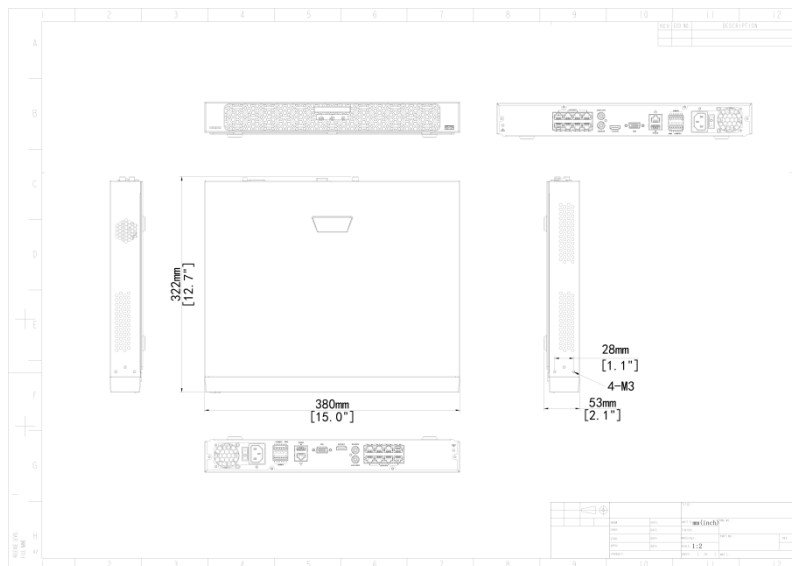
	<p>Smart On: 2 x 12MP@30, 2 x 4K@30, 6 x 4MP@30, 8 x 3MP@30, 12 x 1080P@30, 16 x 720P@30</p> <p>NVR502-32B-P16-IQ:Smart Off: 2 x 16MP@30, 2 x 12MP@30, 4 x 4K@30, 8 x 4MP@30, 10 x 3MP@30, 16 x 1080P@30, 32 x 720P@30</p> <p>Smart On: 2 x 12MP@30, 2 x 4K@30, 6 x 4MP@30, 8 x 3MP@30, 12 x 1080P@30, 24 x 720P@30, 32 x D1</p>
Decoding Capability Description	<p>*. The resolution of each channel cannot exceed 8192 pixels in length and 4096 pixels in width.; *. For VGA/HDMI independent output, the VGA live video is output by default. To output the highest resolution video from the HDMI port, please clear the VGA video on the preview page.</p>
Audio Compression	G.711A, G.711U
<b>Network</b>	<b>Description</b>
Incoming Bandwidth	<p>Smart Off: 320Mbps</p> <p>Smart On: 160Mbps</p>
Outgoing Bandwidth	160Mbps
Remote Users	128
Protocols	TCP/IP; P2P; NTP; DHCP; PPPoE; HTTP; HTTPS; DNS; DDNS; SNMP; SMTP; NFS; RTSP; IPv6; IPv4
Browser(Plugin)	Windows: IE (IE10/ 11), Firefox (version 52.0 and above), Chrome (version 45 and above), Edge (version 79 and above)
<b>Video/Audio Input</b>	<b>Description</b>
IP Video Input	<p>NVR502-08B-P8-IQ:8-ch</p> <p>NVR502-16B-P16-IQ:16-ch</p> <p>NVR502-32B-P16-IQ:32-ch</p>
RCA Audio Input	1-ch
<b>Video/Audio Output</b>	<b>Description</b>
HDMI Output	4K(3840x2160)/30Hz, 1920x1080/60Hz, 1920x1080/50Hz, 1600x1200/60Hz, 1280x1024/60Hz, 1280x720/60Hz, 1024x768/60Hz
VGA Output	1920x1080/60Hz, 1920x1080/50Hz, 1600x1200/60Hz, 1280x1024/60Hz, 1280x720/60Hz, 1024x768/60Hz
RCA Audio Output	1-ch
Liveview Display	<p>NVR502-08B-P8-IQ:1/4/6/8/9</p> <p>NVR502-16B-P16-IQ:1/4/6/8/9/16</p> <p>NVR502-32B-P16-IQ:1/4/6/8/9/16/25/32</p>
Corridor Mode Screen	NVR502-08B-P8-IQ:3/4/5/7/9

	NVR502-16B-P16-IQ:3/4/5/7/9/10/12/16 NVR502-32B-P16-IQ:3/4/5/7/9/10/12/16/32
<b>Two-way Audio</b>	Description
Two-way Audio	1-ch, RCA (Using the audio input and output)
<b>Snapshot</b>	Description
FTP/Schedule/Event Snapshot	4-ch snapshot, up to 4K resolution
<b>Recording</b>	Description
Recording Resolution	16MP/12MP/8MP/6MP/5MP/4MP/3MP/1080P/960P/720P/D1/2CIF/CIF
Synchronous Playback in Local	16-ch
<b>Smart</b>	Description
VCA Detection by IPC	Face Detection; face detection; Vehicle Detection; SIP (Intrusion Detection, Cross Line Detection, Enter Area, Leave Area); Ultra Motion Detection (UMD); Temperature Detection (Fire Detection, Smoking Detection, Temperature Measurement, Smoke and Fire Detection); People Counting (People Flow Counting, Crowd Density Monitoring); Video Metadata; Traffic Monitoring
Smart by NVR	Face Detection; face detection; Smart Intrusion Prevention (SIP); Ultra Motion Detection (UMD)
VCA Search	Motor Vehicle Search; Non-Motor Vehicle Search; Human Body Search; General Search; People Counting Report; Heat Map; SmartSearch+; AcuSearch
Smart by IPC	All channels (up to 8 images/s in total)Face Detection, face detection, Vehicle Detection, Temperature Detection, SIP, UMD, Video Metadata, Traffic Monitoring
Search by Image	Support
Vehicle Picture Library	Up to 5 vehicle picture libraries, with up to 25,000 vehicle pictures in total
SIP by NVR	4-ch
UMD by NVR	8-ch
Capacity of Snapshot Records	2 millions records for face snapshot; 2 millions records for vehicle snapshot; 3 millions records for SIP; 2 millions records for video Metadata
<b>Alarm</b>	Description
General Alarm	Defocus Detection; Scene Change Detection; Object Left Behind; Object Removed; Auto Tracking; Motion Detection; Tampering; Human Body Detection; Video Loss; Alarm Input; Audio Detection
Alert Alarm	IP Conflict; Network Disconnected; Disk Offline; Disk Abnormal; Illegal Access; Hard Disk Space Low; Hard Disk Full; Recording/Snapshot Abnormal; Array Damaged; Array Degraded
<b>GUI Language</b>	Description

GUI Language	38 languages: Simplified Chinese, Traditional Chinese, English, Vietnamese, Thai, Turkish, Spanish (Latin America), Portuguese (Brazil), Spanish, Portuguese, French, German, Italian, Dutch, Polish, Czech, Hungarian, Slovak, Russian, Hebrew, Arabic, Ukrainian, Estonian, Bulgarian, Greek, Romanian, Danish, Swedish, Norwegian, Finnish, Croatian, Slovenia, Serbia, Korean, Japanese, Latvian, Lithuanian, Persian
<b>Hard Disk</b>	<b>Description</b>
SATA	2 SATA Interfaces
Capacity	Up to 16TB for each HDD (The maximum HDD capacity varies with environment temperature)
Disk Group	Support
Redundant Storage	Support
Disk Array Type	RAID 1
<b>External Interface</b>	<b>Description</b>
Network Interface	1 RJ45 10M/100M/1000M self-adaptive Ethernet Interface
USB	Front panel: 1 x USB2.0; Rear panel: 1 x USB3.0
RS485	1
RS232	N/A
Alarm In	8-ch
Alarm Out	2-ch
Power Supply	AC 100~240V
Power Switch	Support
<b>PoE</b>	<b>Description</b>
PoE Interface	NVR502-08B-P8-IQ:8 RJ45 10M/100M self-adaptive Ethernet Interface NVR502-16B-P16-IQ/NVR502-32B-P16-IQ:16 RJ45 10M/100M self-adaptive Ethernet Interface
Max Power	NVR502-08B-P8-IQ:Max 30W for single port, Max 130W in total NVR502-16B-P16-IQ/NVR502-32B-P16-IQ:Max 30W for single port, Max 240W in total
Supported Standard	IEEE 802.3at, IEEE 802.3af
<b>Working Environment</b>	<b>Description</b>
Working Temperature	-10 °C ~ 50 °C (14 °F ~ 122 °F)
Working Humidity	≤ 90% RH (non-condensing)
Power Consumption (without HD D)	≤ 12W

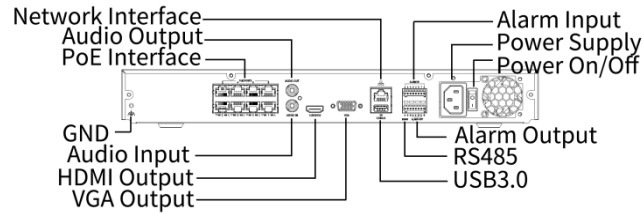
Dimensions	Description
Weight (without HDD)	≤ 2.7Kg (6.0lb)
Height	1U
Dimensions	380mm × 322mm × 53mm (15.0" × 12.7" × 2.1")
Certification	Description
Certification	CE; FCC; UL; RoHS; WEEE
CE	EN 55032, EN 61000-3-3, EN IEC 61000-3-2, EN 55035
FCC	Part15 Subpart B

## Dimensions

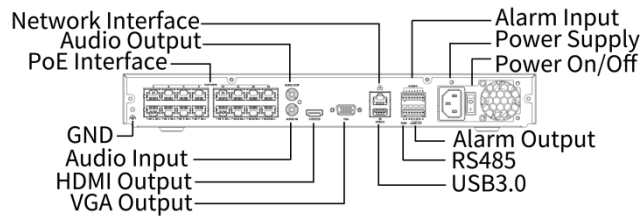


## Rear Panel

[NVR502-08B-P8-IQ]



[NVR502-16B/32B-P16-IQ]



### Zhejiang Uniview Technologies Co., Ltd.

No. 369, Xietong Road, Xixing Sub-district, Binjiang District, Hangzhou City, 310051, Zhejiang Province, China (Zhejiang) Pilot Free Trade Zone, China

Email: [overseasbusiness@uniview.com](mailto:overseasbusiness@uniview.com); [globalsupport@uniview.com](mailto:globalsupport@uniview.com)

<http://www.uniview.com>

©2023-2024 Zhejiang Uniview Technologies Co., Ltd. All rights reserved.

\*Product specifications and availability are subject to change without notice.

\*Despite our best efforts, technical or typographical errors may exist in this document. Uniview cannot be held responsible for any such errors and reserves the right to change the contents of this document without prior notice.