

TM50 user guide

LCD touch screen keypad

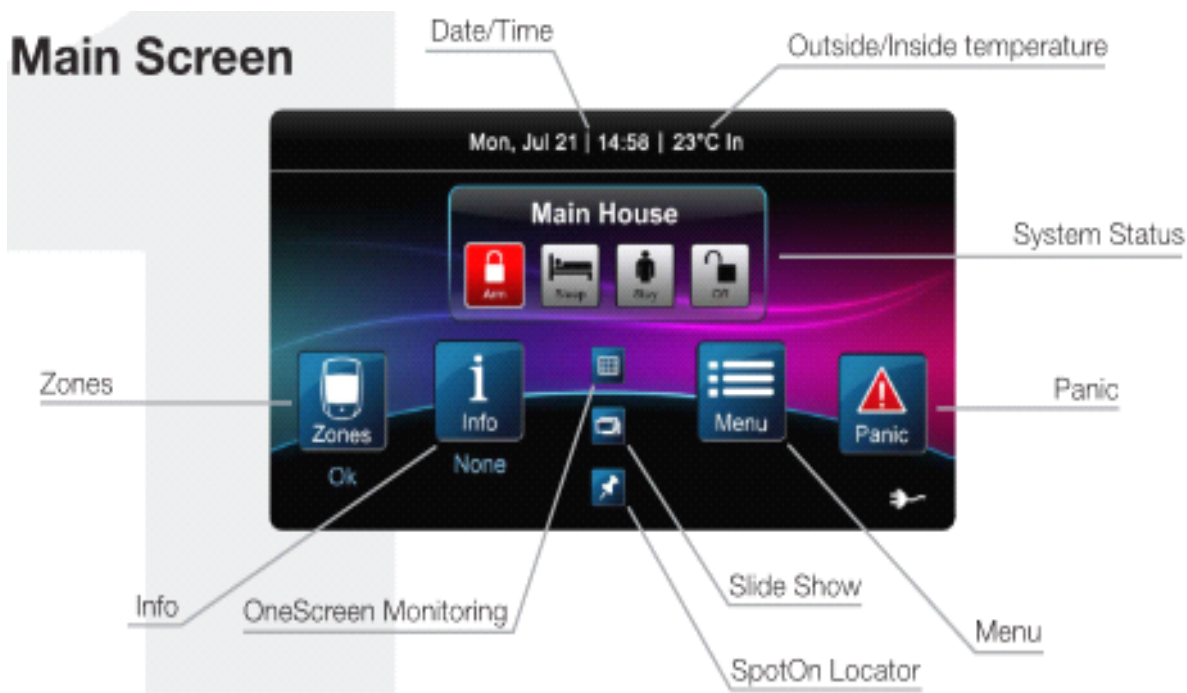
PARADOX
Alarm System

Author: Alvin Leong Date: 25th May 2015, Revision: V1

Paradox TM50 Touch Screen Keypad for SP&MG Series with V4.72 and above and EVO Series with V2.16 and above. TM50 is bundled with 4GB MicroSD Card and SD Card Adapter for Firmware Upgrade, Floor Plan Input and Picture Display.

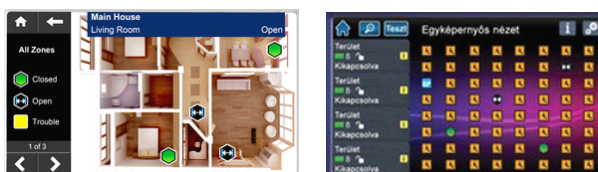


* Note!!! - TM50 is bundled with 4GB MicroSD Card. Please insert the SD Card into TM50 MicroSD Card slot located at the top right hand side before power-up TM50 for Firmware upgrade or smooth operation. It may take up to few minutes to installing and upgrading the system.



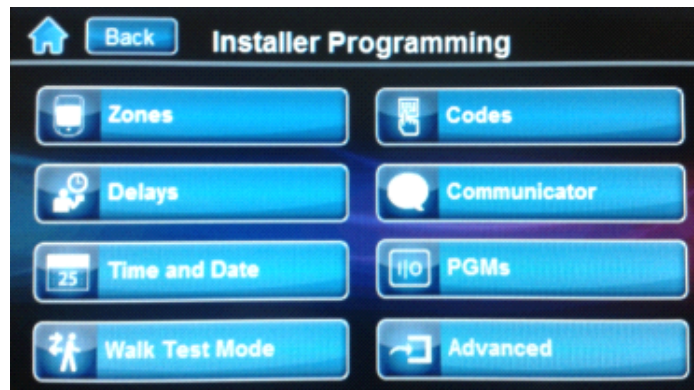
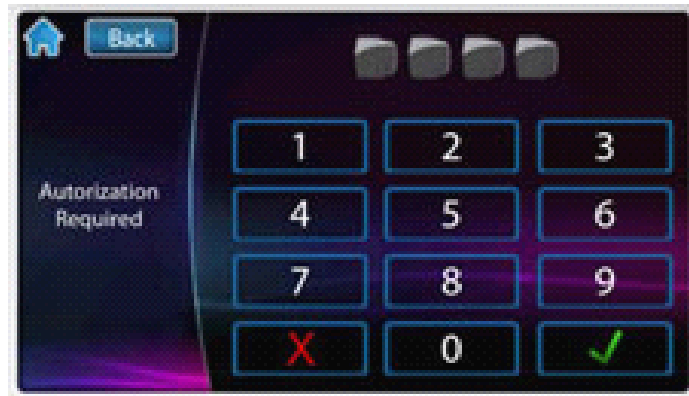
TM50 Menu System

- **Zones** - view zone status and Enable/Disable Door Chime.
- **Info** - view memory event (zone triggered).
- view system trouble.
- **Menu**
 - **Bypass Zone** - Bypass selected zone.
 - PGM - 6 PGM Utility & 1 Smoke Detector reset programming.
 - Alarm Clock - Alarm timer.
 - Zone Chiming - Enable/Disable Door Chime.
 - Clean Screen - Clean screen.
 - Add-On - for SpotOn Locator and One Screen Monitoring.




- **Setting**
 - **Display Setting** - Brightness, Dim & Delay display setting.
- Calibrate Touch Screen.
 - **Sound** - Volume or Mute.
 - **Slide Show** - On/Off Screen Saver.
- Display Photo.
- Shuffle Photo.
 - **Home Page** - Set Time and Date.
- Show / Hide homepage item.
- Temperature Measure setting and display.
 - **Language** - Language selection.
 - **Update Firmware** - Firmware information.
 - **Calibrate Sensor** - Temperature In/Output (require temperature measurement devices).
 - **Product Info** - Product information.

- **System Setup** - Input '0000' in the screen below for Installer Programming.
 - Input '1234' (Master Code) for Master Programming Menu.



Installer Programming Menu

- **Zones**
 - Zone Programming.
 - Click on  to start the zone programming individually.
 - Wireless or Wired Zone selection.
 - Zone Type (Delay, Instant, Follow, Panic and etc) selection.
 - Partition 1 or 2 selection.
- **Delays**
 - Entry / Exit Delay 1 & 2 and Bell Cut-Off Timer.
- **Time & Date**
 - Time & Date setting.
 - Date Format.
- **Walk Test Mode**
 - Enable / Disable walk test mode.
- **Codes**
 - to change Installer / Maintenance Code.
- **Communicator**
 - CMS Monitoring Programming.
 - CMS Backup Programming.
 - Phone Programming.
 - Pager Programming.
- **PGMs**
 - PGM Output / Input Programming.
- **Advanced**
 - for Advance programming using Section Code.



Master Programming Menu

- **Users**
 - Create, Delete or Edit User Code.
 - up to 32 code available.
- **Delays**
 - Entry / Exit Delay 1 & 2 and Bell Cut-Off Timer.
- **Time & Date**
 - Time & Date setting.
 - Date Format setting.
- **Communicator**
 - **Personal Phone Setup.**
 - **SMS Phone Setup.**
 - Pager Number Setup.
 - GSM Setup.
 - Call PC Software (link to PC)
- **Auto-Arm**
 - Set auto arming on time.
- **Erase Lost Remote**
 - Edit remote control serial number stored.
- **Options**
 - Enable/Disable Bell Squawk on keypad or remote.
 - Enable/Disable Exit Delay with remote.