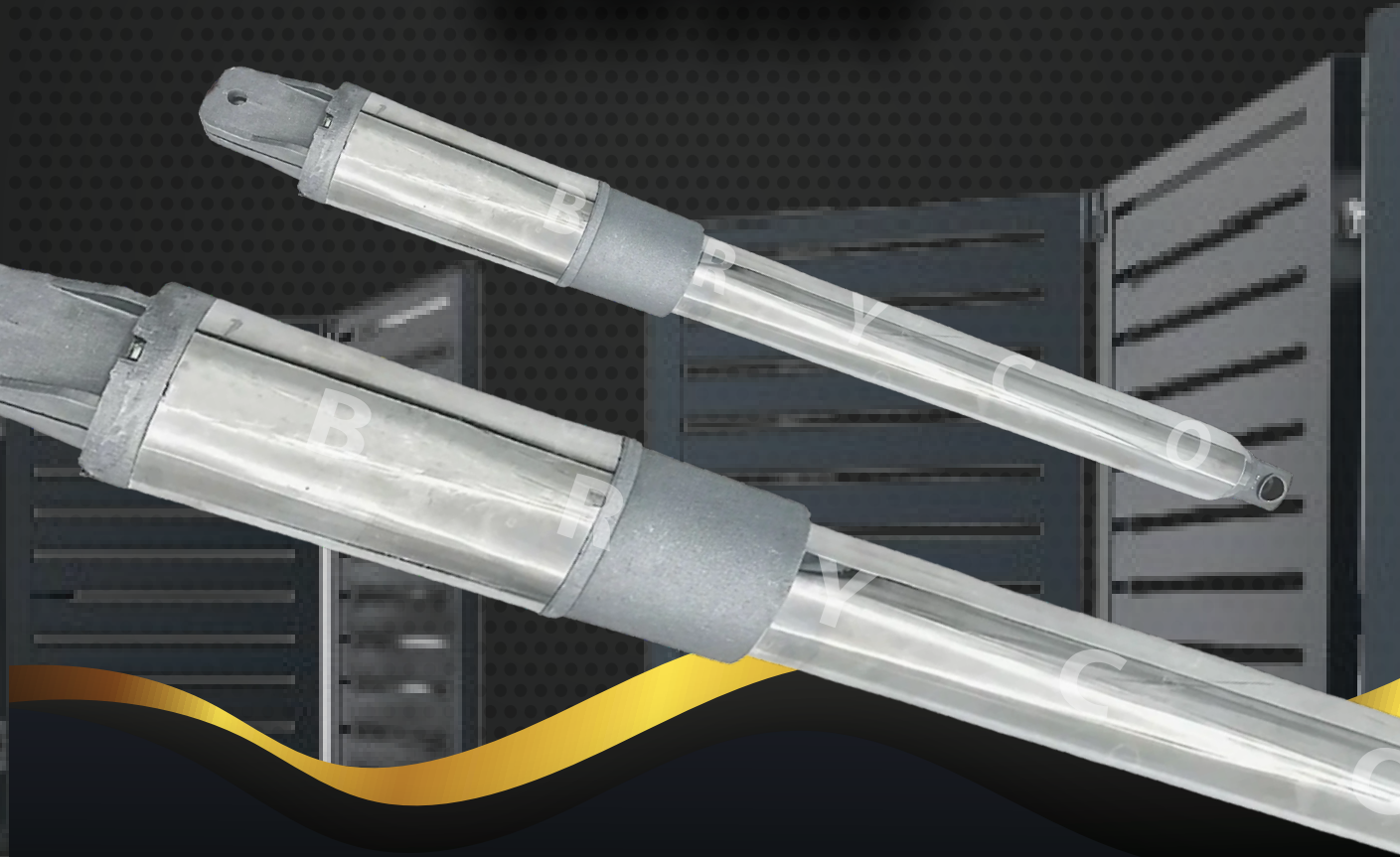




# SWING & FOLDING

ARM GATE MOTOR

## SW300



Electronic anti-crushing sensor,  
automatic stop when it hits some object



Dual speed design with soft  
cushion stopping

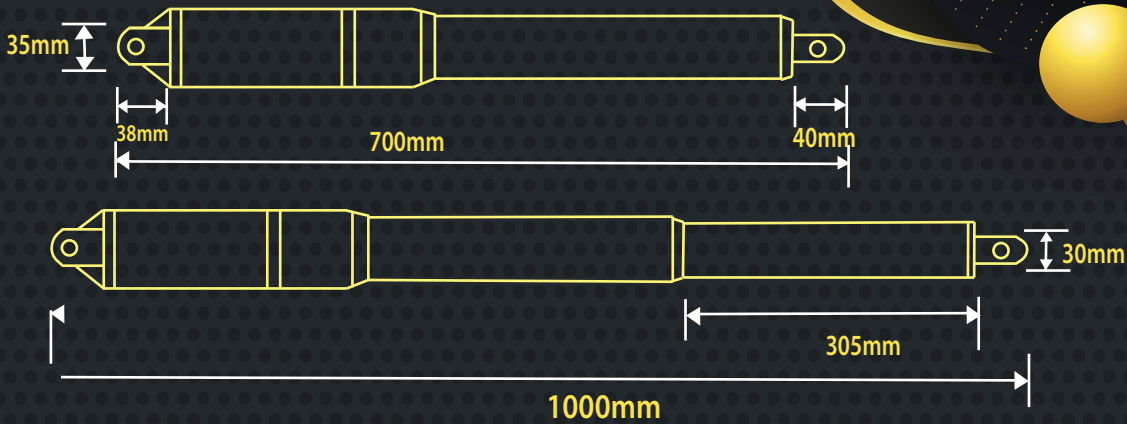


Support backup battery with  
charging during power failur



Smooth and silent gate  
operation

# DIMENSION



# SPECIFICATION

Driving Method	Electro - mechanical screw driver piston type
Operating Voltage	DC 18V for normal speed DC 12V for ending speed
Motor Output	15 watt per arm
Max Weight of Gate	200 kg
Max Length of Gate	4 meters
Max Opening Angle	120°
Dual Speed	Yes
Working Temperature	-20°C to +50°C
Weight	10 kg

# ACCESSORIES



**CR3**

Swing Type Control Panel



**GP BATTERY**

Backup Battery 12V 7AH



**3AMP Transformer**

12V9V, 3AMP Transformer  
(12-9-0-9-12)



**Spare Part set**

2 sides parts (Wall/Pillar  
+ Triangle bracket  
+ small gate mounted),  
stopper, screw and nuts



**PVC BOX**

(33.5cm X 27cm X 12cm)



**Remote Control set**

1x Receiver , 3x Transmitter