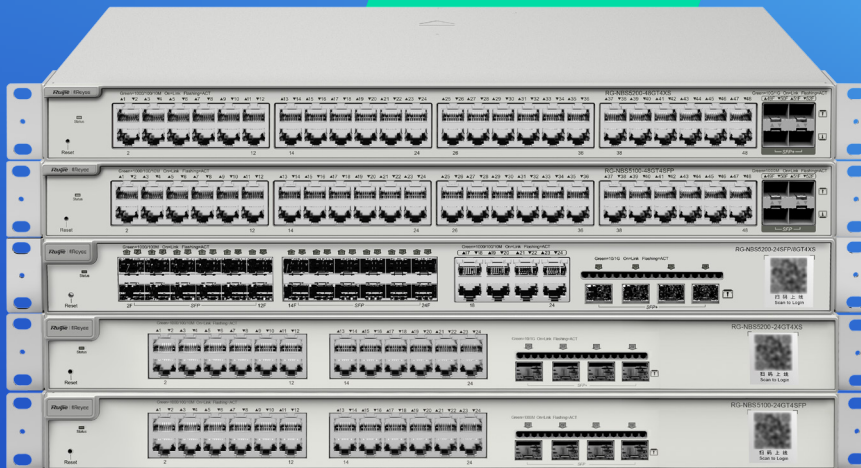


RG-NBS51/52 series

Layer 2+ Cloud Managed Switches

DATASHEET



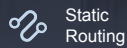
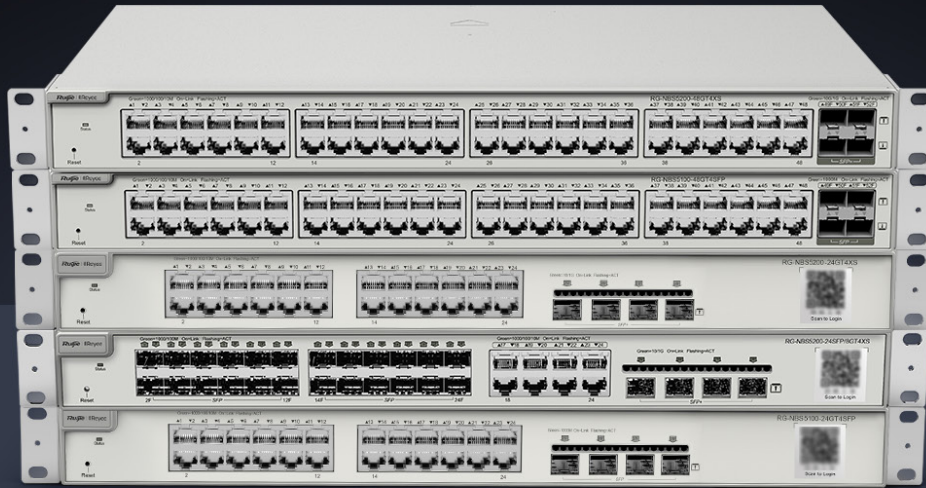
Highlights

- Enterprise-class quality ensures High Performance
- Static routing allows traffic to be routed at Layer 3
- Multiple security policies protect your network
- Lifetime management on Ruijie Cloud at anytime anywhere

Highlight Features

RG-NBS5000 Series Switch

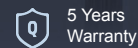
High performance Layer 2+ switch for core/aggregation



Static Routing



6kV Surge Protection



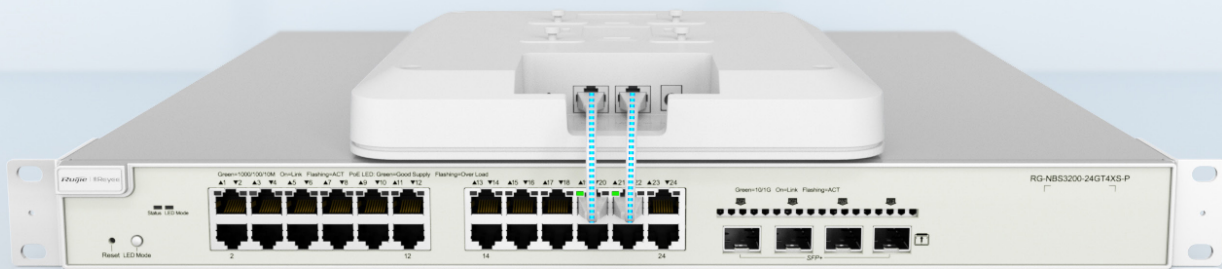
5 Years Warranty

Enterprise-class Quality Ensures High Performance

[Link Aggregation](#)

[IGMP Snooping](#)

[VLAN](#)



Highlight Features

Enterprise-class Quality Ensures High Performance

Link Aggregation

IGMP Snooping

VLAN

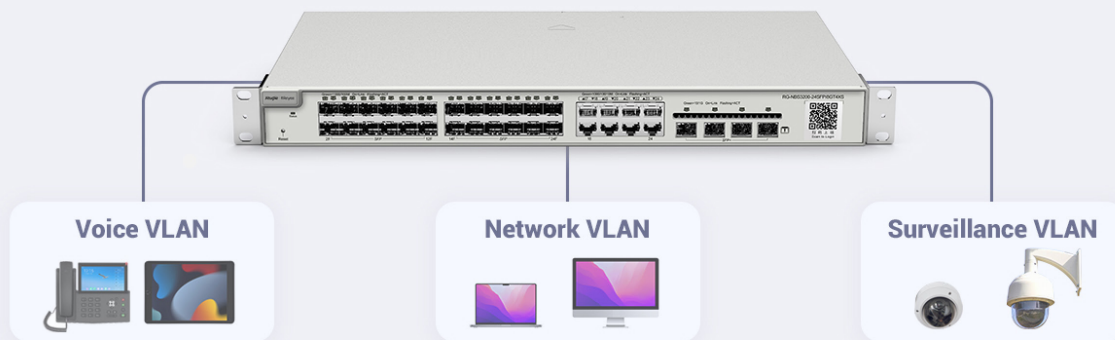


Enterprise-class Quality Ensures High Performance

Link Aggregation

IGMP Snooping

VLAN



Highlight Features

Multiple Security Policies Protect Your Network

Security Stability



Multiple Security Policies Protect Your Network

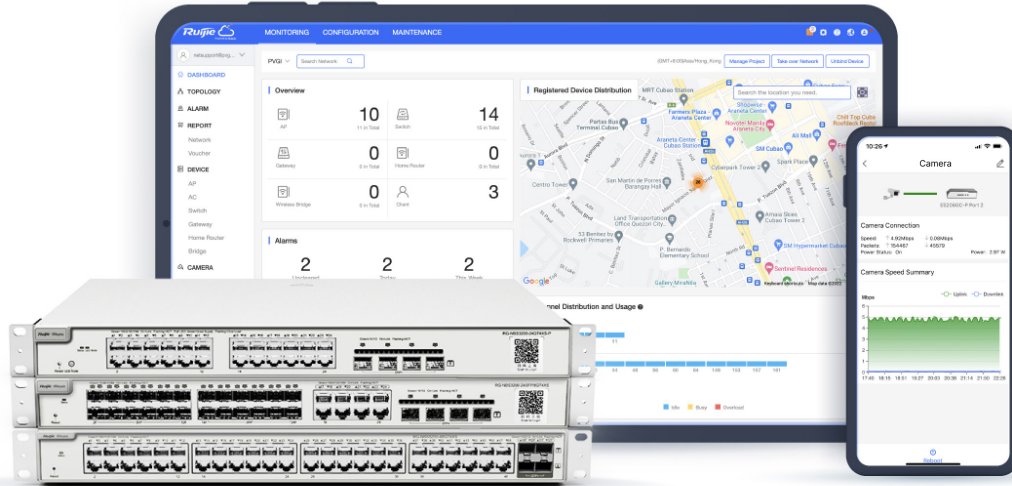
Security Stability



Highlight Features

Cloud, Make Your Business Easy

- SON, zero touch provisioning to Cloud
- Monitor switch statistics at anytime anywhere
- Configure VLANs on Ruijie Cloud APP
- Easy maintenance, save onsite time and cost



Specifications

Basic

Model	RG-NBS5100-24GT4SFP	RG-NBS5100-24GT4SFP-P	RG-NBS5100-48GT4SFP	RG-NBS5200-24GT4XS	RG-NBS5200-24GT4XS-P	RG-NBS5200-24SFP/8GT4XS	RG-NBS5200-48GT4XS
10/100/1000Base-T ports	24	24	48	24	24	8 Combo	48
SFP ports	4	4	4	-	-	24	-
SFP+ ports	-	-	-	4	4	4	4
Layer Type	Layer 2+	Layer 2+	Layer 2+	Layer 2+	Layer 2+	Layer 2+	Layer 2+
Switching capacity	56 Gbps	56 Gbps	104 Gbps	128 Gbps	128 Gbps	128 Gbps	216 Gbps
Forwarding rate	42 Mpps	42 Mpps	78 Mpps	96 Mpps	96 Mpps	96 Mpps	132 Mpps
Packet Buffer	12 Mbit	12 Mbit	16 Mbit	12 Mbit	12 Mbit	12 Mbit	16 Mbit
MAC address table	16,000	16,000	16,000	16,000	16,000	16,000	16,000
Maximum VLAN Support	4094	4094	4094	4094	4094	4094	4094
Dimensions (W x D x H)	440 mm x 207.5 mm x 43.6 mm	440 mm x 357.6 mm x 43.6 mm	440 mm x 267.5 mm x 43.6 mm	440 mm x 207.5 mm x 43.6 mm	440 mm x 357.6 mm x 43.6 mm	440 mm x 267.5 mm x 43.6 mm	440 mm x 267.5 mm x 43.6 mm
Weight (With package)	2.9 kg	4.75 kg	3.6 kg	2.9 kg	4.75 kg	3.35 kg	3.6 kg
MTBF	> 200,000	> 200,000	> 200,000	> 200,000	> 200,000	> 200,000	> 200,000
Warranty	5 Years	5 Years	5 Years	5 Years	5 Years	5 Years	5 Years

Layer 2 Features

Jumbo Frame	9216	9216	9216	9216	9216	9216	9216
Flow Control	✓	✓	✓	✓	✓	✓	✓
STP (IEEE 802.1d)	✓	✓	✓	✓	✓	✓	✓
RSTP (IEEE 802.1w)	✓	✓	✓	✓	✓	✓	✓
MSTP (IEEE 802.1s)	-	-	-	-	-	-	-
Port Fast	✓	✓	✓	✓	✓	✓	✓
BPDU Guard	✓	✓	✓	✓	✓	✓	✓
Errdisable Recovery	✓	✓	✓	✓	✓	✓	✓

Specifications

Layer 2 Features

Model	RG-NBS5100-24GT4SFP	RG-NBS5100-24GT4SFP-P	RG-NBS5100-48GT4SFP	RG-NBS5200-24GT4XS	RG-NBS5200-24GT4XS-P	RG-NBS5200-24SFP/8GT4XS	RG-NBS5200-48GT4XS
Max. Aggregation Group	16	16	16	16	16	16	16
Max. Member per Group	8	8	8	8	8	8	8
Unknown Unicast Storm Suppression	✓	✓	✓	✓	✓	✓	✓
Multicast / Broadcast Storm Suppression	✓	✓	✓	✓	✓	✓	✓
Many-to-One Mirroring	✓	✓	✓	✓	✓	✓	✓
VLAN Range	1-4094	1-4094	1-4094	1-4094	1-4094	1-4094	1-4094
Port-based VLAN	✓	✓	✓	✓	✓	✓	✓
MAC-based VLAN	✓	✓	✓	✓	✓	✓	✓
IP-based VLAN	✓	✓	✓	✓	✓	✓	✓
Voice VLAN	✓	✓	✓	✓	✓	✓	✓
RLDP	✓	✓	✓	✓	✓	✓	✓
LLDP / LLDP-MED	✓	✓	✓	✓	✓	✓	✓
Cable Testing	✓	✓	✓	✓	✓	✓	✓
IGMP Snooping v1/v2/v3	✓	✓	✓	✓	✓	✓	✓

Software Features

Ping	✓	✓	✓	✓	✓	✓	✓
Traceroute	✓	✓	✓	✓	✓	✓	✓
ACL Entries	1900	1900	1900	1900	1900	1900	1900
Static Routing	✓	✓	✓	✓	✓	✓	✓
IP Standard ACL	✓	✓	✓	✓	✓	✓	✓

Specifications

Software Features

Model	RG-NBS5100-24GT4SFP	RG-NBS5100-24GT4SFP-P	RG-NBS5100-48GT4SFP	RG-NBS5200-24GT4XS	RG-NBS5200-24GT4XS-P	RG-NBS5200-24SFP/8GT4XS	RG-NBS5200-48GT4XS
MAC-based Extended ACL	✓	✓	✓	✓	✓	✓	✓
IP-based Extended ACL	✓	✓	✓	✓	✓	✓	✓
Port-based Rate Limit (Ingress/Egress)	✓	✓	✓	✓	✓	✓	✓
SNMP v1/v2c/v3	-	-	-	-	-	-	-
DHCP Server	✓	✓	✓	✓	✓	✓	✓
Web Management	✓	✓	✓	✓	✓	✓	✓
Management IP	10.44.77.200	10.44.77.200	10.44.77.200	10.44.77.200	10.44.77.200	10.44.77.200	10.44.77.200
HTTP/HTTPS	✓	✓	✓	✓	✓	✓	✓
Cloud Management	✓	✓	✓	✓	✓	✓	✓
SON (Self-Organizing Network) with IP	✓	✓	✓	✓	✓	✓	✓
Camera Recognition	✓	✓	✓	✓	✓	✓	✓
Loop Prevention	✓	✓	✓	✓	✓	✓	✓
Loop Notification	✓	✓	✓	✓	✓	✓	✓
PoE Usage Alarm	-	-	✓	-	-	✓	-
Protection Port	✓	✓	✓	✓	✓	✓	✓
IP Source Guard	✓	✓	✓	✓	✓	✓	✓
Anti-ARP Spoofing	✓	✓	✓	✓	✓	✓	✓
DHCP Snooping	✓	✓	✓	✓	✓	✓	✓
DHCP Client	✓	✓	✓	✓	✓	✓	✓

Package Contents

Device	RG-NBS5100-24GT4SFP	RG-NBS5100-24GT4SFP-P	RG-NBS5100-48GT4SFP	RG-NBS5200-24GT4XS	RG-NBS5200-24GT4XS-P	RG-NBS5200-24SFP/8GT4XS	RG-NBS5200-48GT4XS
Mounting Bracket	2	2	2	2	2	2	2
Foot pad	4	4	4	4	4	4	4
Power supply	Power adapter	Power cord	Power cord	Power cord	Power cord	Power cord	Power cord
Quick Start Guide	1	1	1	1	1	1	1
Warranty Card	1	1	1	1	1	1	1
Accessories	Screws * 6	Screws * 8	Screws * 6	Screws * 6	Screws * 8	Screws * 6	Screws * 8
Package Weight	1.2 kg	4.75 kg	2 kg	2.4 kg	4.75 kg	4.5 kg	2.9 kg
Package Dimension (w x d x h)	513 mm x 333 mm x 145 mm	573 mm x 468 mm x 165 mm	573 mm x 401 mm x 145 mm	513 mm x 333 mm x 145 mm	573 mm x 468 mm x 165 mm	573 mm x 401 mm x 145 mm	573 mm x 401 mm x 145 mm

Ruijie | **Rcycc**

 **Redefine your easy network**



Copyright ©2000-2022 Ruijie Networks Co., Ltd. All rights reserved.

No part of this document may be reproduced or transmitted in any form or any means without prior written consent of Ruijie Networks Co., Ltd.

Notice

This content is applicable only to regions outside the China mainland. Ruijie Networks Co., Ltd. reserves the right to interpret this content.

The information contained herein is subject to change without notice. Nothing herein should be construed as constituting an additional warranty. Ruijie Networks Co., Ltd. shall not be liable for technical or editorial errors or omissions contained herein.



Ruijie Networks Co., Ltd.
Building 19, Juyuanzhou Industrial Park, No.618
Jinshan Road, Cangshan District, Fuzhou, Fujian, China
Website: <https://www.ruijienetworks.com>