



IP-COM
World Wide Wireless

M50

Multi-WAN Hotspot Router

M50

Multi-WAN Hotspot Router

Product Introduction

IP-COM Multi-WAN Hotspot Router M50 is designed for small- and medium-sized enterprises to implement intelligent network access and management. It offers an AP management system and a multi-authentication management system, and supports various enterprise-oriented functions including filter management, intelligent bandwidth management, PPTP/L2TP/IPSec VPN, and multi-WAN.



Concurrent users 200



AP controller 100 APs



5 Gigabit ports



Up to 4 WAN ports



Captive Portal/PPPoE Server



Smart bandwidth control

Key Features

- Multi WAN Load Balance
- Captive Portal/PPPoE Server
- Smart bandwidth control
- PPTP/L2TP/IPSec Server
- Built-in AP Controller

Product Features

Multi WAN Load Balance

M50 supports 4 WAN ports. It can realize bandwidth averaging between two WAN ports base IP Group. Also it reserve the possibility of bandwidth expansion in the future.

Captive portal and PPPoE server

M50 integrates with captive portal service. A landing page will pop-up when mobile device connect to wifi network. Once username and password is provided, the user will be able to access Internet.

Smart Bandwidth Control

M50 features with smart bandwidth management. It will adjust each user's download and upload bandwidth automatically according to all users bandwidth usage to avoid bandwidth insufficient.

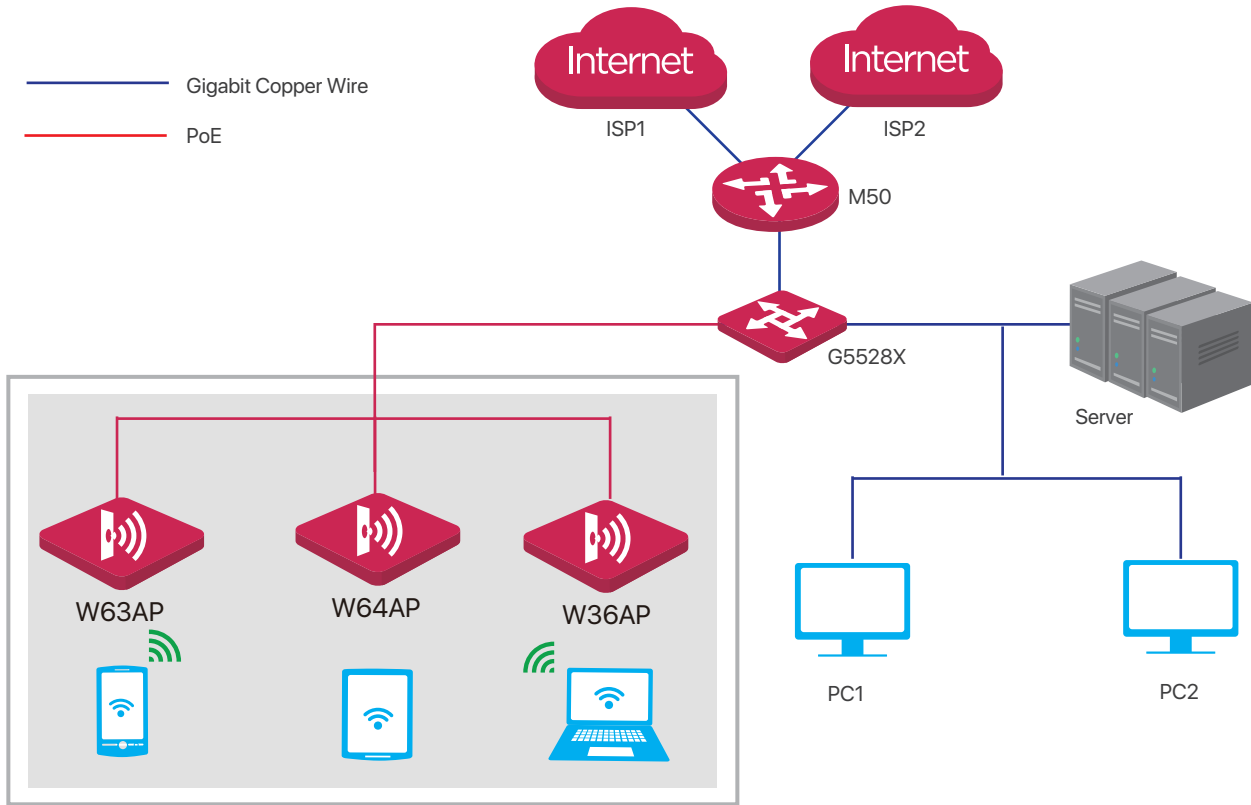
PPTP/L2TP/IPSec Server

M50 supports multiple VPN protocols including IPsec, PPTP and L2TP in Client/Server mode. It is easily to setup a secure data link between branch and headquarter through LAN-to-LAN/Client-to-LAN mode.

Built-in AP Controller

M50 intergrates with AP controller to manage all IP-COM indoor access point. It will discover AP automatically when AP connect into network. You can edit AP's deployment location, SSID, Security, Output power, client limitation for SSID, Schedule Reboot etc function on the WEB UI at a single location.

Application Scenarios



Related Products



W63AP

- Gigabit port
- Up to 1167 Mbps dual-band data rate
- MU-MIMO for high throughput
- Supports to be centrally managed by all IP-COM access controllers (AC) and enterprise routers that includes AC functionality



G5528X

- 24 10/100/1000Mbps RJ45 ports
- 2*10G Uplinks & 2*10G Stack Links
- 16 K MAC address table and MAC address auto-learning
- Switching capability: 128Gbps
- Desktop/Wall-mountable

Product Specifications

Hardware Specifications

Dimension	294*178.8*44(mm)
CPU	800MHz Dual core
RAM	512MB
FLASH	128MB
Interfaces	5*GE(1-4 WAN/ 4-1 LAN) 1*RJ45 Console
Power	100-240V 0.7A 50/60Hz

Software Specifications

Max user capacity	200
Max New sessions	3900
Max Concurrent Sessions	55000
MAX AP Manage number	100APs
Internet Connection Type	PPPoE/DHCP/Static IP
Authrization Service	Captive Portal, PPPoE
Captive Portal	300 Portal Accounts Customize E-bulletin
PPPoE Server	100 PPPoE Accounts Customize E-bulletin
Bandwidth Control	Smart Bandwith Control Manual Definition
Internet Access Control	IP/mac/URL Filter
VPN Protocal	PPTP、L2TP、IPSEC
Bandwidth Control	Port Forwarding DMZ
Security Setting	IP-MAC Binding ARP Attack Protection
DDNS	Dyndns/No-Ip
UPNP	Support
Firmware Upgrade	Local firmware update Online Firmware update
System Tool	Schedule Reboot Restore or Backup Configuration User Statistics
Network Status View	Traffic Statistics System Log

IP-COM
World Wide Wireless

IP-COM NETWORKS CO.,LTD.

Tower E3, No.1001, Zhongshanyuan Road,
Nanshan District, Shenzhen, China. 518052

Service: info@ip-com.com.cn

Inquiry: marketing@ip-com.com.cn

Tel: +86-755-27653089

