



IP-COM
World Wide Wireless

G5328F

L3 Managed Switch

G5328F

L3 Managed Switch

Products Description

G5328F is an IP-COM Layer-3 managed switch. To meet the demand of high-performance access, the switch provides 24 10/100/1000 Mbps Base-T Ethernet ports and 4 separate 1000 Mbps Base-X SFP ports. With an innovative hardware structure and software platform, it features a powerful processing capacity and complete security protection mechanism, making management and maintenance easy and simple, fully meeting the demands of high-density user access and high-performance aggregation, ideal for the aggregation layer or core layer of such medium to large networks as enterprises and campuses.



Key Feature

- Comply with IEEE 802.3, IEEE 802.3u, IEEE 802.3ab, IEEE 802.3ad, IEEE 802.3z, IEEE 802.3x, IEEE 802.1p, IEEE 802.1q, IEEE 802.1w, IEEE 802.1d, IEEE 802.1s standards
24 x 10/100/1000 Base-T Ethernet ports, 4 separate 1000 Base-X SFP ports
- 16 K MAC address table and MAC address auto-learning
- 12Mb large cache queue
- Supports abundant services, such as static routing, DHCP server, VLAN, IGMP, ACL, SNMP and Telnet
- Built-in 6 kV professional lightning protection power, 19 inch/1 u standard
- rack-mounted design

Product Features



6 kV professional lightning protection

Built-in professional lightning protection circuit, support 6KV port lightning protection, effectively reduce the damage caused to the network system by thunderstorms, and improve the robustness of the system.



Layer-3 routing protocol

Supports Layer-3 static routing protocol, meeting the demand of the 3-layer networking environment in which Layer-3 networks should be interconnected while Layer-2 networks should be isolated, thus realizing an efficient and fast layer-3 routing forwarding.



12M large cache

Provides a large 12Mb cache, which can meet the network application requirements of large traffic bursts such as engine search, IPTV, P2P download, and no packet loss during traffic bursts.

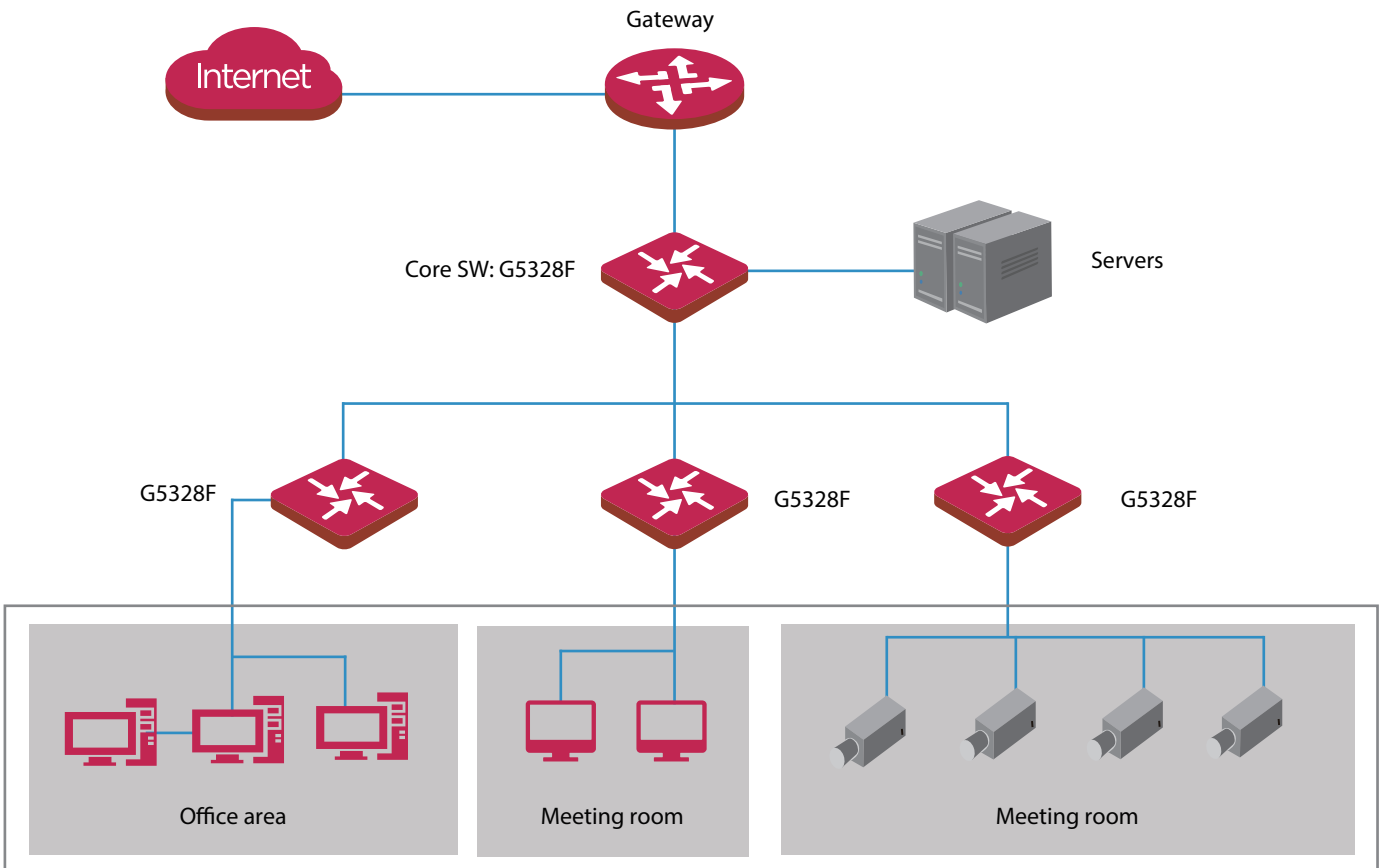


Sound security features

Supports IP address filtering, MAC address filtering, ARP filtering, DoS attack defense, and ACL access control list, improving network security.

Application Scenarios

- 1G fiber
- 1G copper cable
- 100M copper cable



Product Model		G5328F
Hardware specifications		
Network standards	IEEE802.3、IEEE802.3u、IEEE802.3ab、IEEE802.3ad、IEEE802.3z、IEEE802.3x、IEEE802.1p、IEEE802.1q、IEEE802.1w、IEEE802.1d、IEEE802.1s	
LED indicators	One Link/Act LED indicator for each port One Power LED indicator for each device One SYS LED indicator for each device	
Fixed ports	24 x 10/100/1000 Base-T Ethernet ports 4 x 1000 Base-X SFP ports	
Port lightning protection	≥6 kV	
Forwarding mode	Store-and-forward	
MAC address table	16K	
Input voltage	DC: 12V 2A AC: 100-240V ~ 50/60Hz	
Dimensions (W x D x H)	440 mm x 284 mm x 44 mm	
Operating environment	Operating temperature: 0°C - 45 Storage temperature: -40°C - 70°C Operating humidity: (10% - 90%)RH, non-condensing, Storage humidity: (5% - 90%)RH, non-condensing	
Whole switch consumption		
Security features	Supports ARP receiving limit Supports unknown MAC address discard Supports DoS attack defense Supports 802.1x security authentication	
VLAN	Supports IEEE 802.1Q VLAN Supports VLAN Layer-3 interfaces Supports three port modes: Access, Trunk and Hybrid	
DHCP	Supports DHCP Server Supports DHCP Relay Supports DHCP Snooping Supports Option 82 policy configuration	
L3 Routing	Supports VLAN-based routing Supports IPv4 static routing adding Supports static ARP adding/deleting Supports ARP aging time configuration	

Port aggregation	<ul style="list-style-type: none"> Supports static aggregation Supports LACP dynamic aggregation
Spanning tree	<ul style="list-style-type: none"> Supports IEEE 802.1d STP (Spanning Tree Protocol) Supports IEEE 802.1w RSTP (Rapid Spanning Tree Protocol) Supports IEEE 802.1s MSTP (Multiple Spanning Tree Protocol) Supports edge port Supports BPDU statistics
Multicast	<ul style="list-style-type: none"> Supports IGMP Snooping V1/V2/V3 Supports port fast leave
Port Mirroring	<ul style="list-style-type: none"> Supports N: 1 port mirroring
QoS	<ul style="list-style-type: none"> Supports SP (Strict Priority) Supports SWRR (Simple Weighted Round Robin) Support WRR (Weighted Round Robin) Supports 802.1p port trust mode Supports DSCP port trust mode Supports a maximum of 8 queue service quality mapping
ACL	<ul style="list-style-type: none"> Supports MAC ACL Supports IP ACL
Loading and upgrade	<ul style="list-style-type: none"> Supports FTP/TFTP/HTTP upgrade Supports configuration import and export
Management and maintenance	<ul style="list-style-type: none"> Supports Telnet configuration, Console port configuration Supports SNMP V1/V2/V3 Supports WEB management and maintenance Supports Ping/Tracert/Connection Detection
Certificates	<ul style="list-style-type: none"> CCC、FCC、CE、RoHS

IP-COM

World Wide Wireless

Headquarters

IP-COM Networks Co.,Ltd.

Tel: +86 755-27653089

Fax: +86 755-27657178

Email: marketing@ip-com.com.cn

Website: www.ip-com.com.cn

ADD: Tower E3, No1001, Zhongshanyuan Road, Nanshan District, Shenzhen, China.

Copyright©2016 IP-COM Networks Co., Ltd. All Rights Reserved.

