



IP-COM
World Wide Wireless

G3328F

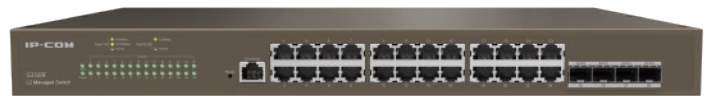
L2 Managed Switch

G3328F

L2 Managed Switch

Product Introduction

G3328F is an layer-2 managed switch designed by IP-COM. Equipped with a developed hardware structure and software platform, this switch features a powerful processing capacity, a complete security protection mechanism, and various means for maintenance and management. With these advantages, it fully meets the demands of high-density connections and high-performance aggregation, ideal for the aggregation layer or core layer of such medium to large networks as enterprises and hotels.



Key Features

- * 10/100/1000Base-T Ethernet port x 24 Independent 1000Base-X SFP port x 4
- * 16K MAC address table and MAC address auto-learning.
- * 12M large buffer.
- * Supports multiple services, such as VLAN, IGMP, QoS, ACL, DHCP Snooping, and Telnet.
- * Equipped with a built-in 6 kV professional lightning protection power and a 19-inch/1 U rack-mounted shell.

Product Features



Cloud management

The IMS cloud platform provides remote management, configuration and maintenance functions, such as fault detection and troubleshooting, log reporting as well as network status monitoring, guaranteeing the stable operation of the network.



Visualization

The system can generate the network topology automatically. It supports IP camera discovery based on ONVIF protocol and network device discovery based on LLDP, as well as online/offline status detection for all devices in the network, which improves the LAN operation and maintenance efficiency and also reduces the maintenance cost.



Dual-image backup

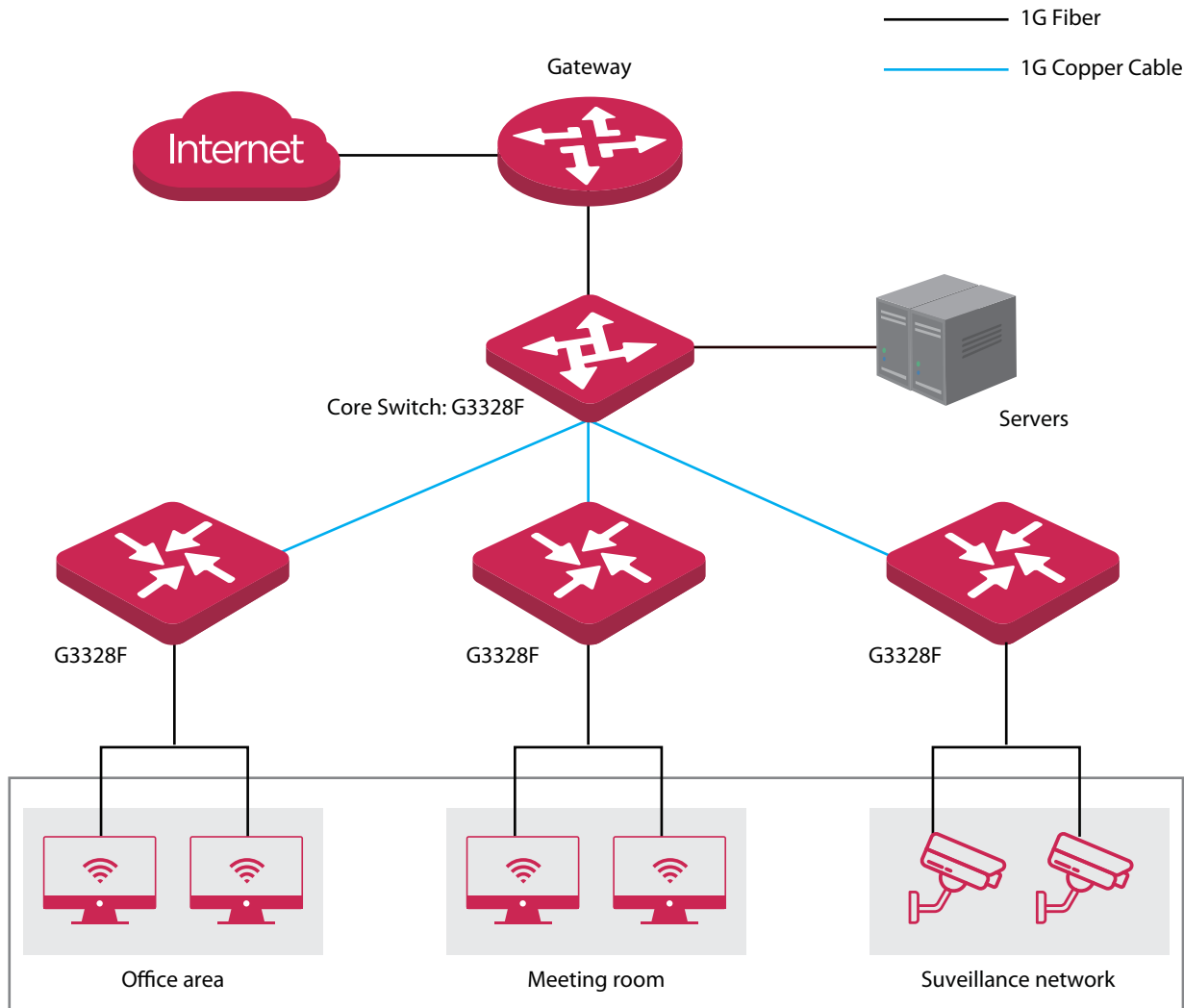
The switch features two system files that backup each other, guaranteeing the proper startup and stable operation of the system.



Optical fiber port aggregation

4 independent SFP ports support optical fiber port aggregation functionality, meeting the demands of long-distance fiber optic networking.

Application Scenarios



Packaging

Hardware specifications	
Product Model	G3328F
Network standards	IEEE 802.3, IEEE 802.3u, IEEE 802.3ab, IEEE 802.3z, IEEE 802.3x, IEEE 802.1p, IEEE 802.1q, IEEE 802.1w, IEEE 802.1d, IEEE 802.1s
LED indicators	One Link/Act LED indicator for each port One Power LED indicator for each device One SYS LED indicator for each device
Fixed ports	10/100/1000Base-T Ethernet port x 24 1000Base-X SFP port x 4
Port lightning protection	≥ 6 kV
Forwarding mode	Store-and-forward
MAC address table	16K
Input voltage	100 - 240V AC 50/60Hz
Dimensions (L x W x H)	440 mm x 179.6 mm x 44 mm
Whole switch consumption	Whole switch consumption: <24 W
Environment	Operating temperature: 0°C - 45°C Storage temperature: -40°C - 70°C Operating humidity: (10% - 90%)RH, non-condensing Storage humidity: (5% - 90%)RH, non-condensing
Software specifications	
Security features	Supports ARP receiving limit Supports discarding unknown MAC addresses Supports DoS attack defense Supports 802.1x security authentication Supports RADIUS authentication
VLAN	Supports 4K VLAN table Supports IEEE 802.1Q VLAN Supports three port link types: Access, Trunk and Hybrid
DHCP	Supports DHCP Snooping Supports Option 82 policy configuration
Port aggregation	Supports static aggregation Supports LACP dynamic aggregation
STP (Spanning Tree Protocol)	Supports IEEE 802.1d STP (Spanning Tree Protocol) Supports IEEE 802.1w RSTP (Rapid Spanning Tree Protocol) Supports IEEE 802.1s MSTP (Multiple Spanning Tree Protocol) Supports edge ports Supports BPDU statistics

Packaging

Multicast	Supports IGMP Snooping V1/V2/V3 Supports fast leave configuration on ports
Port mirroring	Supports N: 1 port mirroring
QoS	Supports SP (Strict Priority) Supports SWRR (Simple Weighted Round Robin) Supports WRR (Weighted Round Robin) Supports 802.1p port trust mode Supports DSCP port trust mode Supports a maximum of 8-queue service quality mapping
Cloud management	Supports delivering configuration remotely Supports log reporting and fault detection Supports remote maintenance: reboot, backup, upgrade
Visualization	Supports router, switch, AP, IP camera discovery Supports automatic generation of topology Supports online/offline status detection for devices Supports remotely rebooting the IP camera
ACL	Supports MAC ACL Supports IP ACL
Loading and upgrade	Supports FTP/TFTP/HTTP upgrade Supports configuration import and export
Management and maintenance	Supports Telnet configuration and Console port configuration Supports SNMP V1/V2/V3 Supports web management and maintenance Supports Ping/Tracert/cable test
Certificates	CCC, FCC, CE, RoHS

IP-COM
World Wide Wireless

IP-COM NETWORKS CO., LTD.

Tower E3, No.1001, Zhongshanyuan Road,
Nanshan District, Shenzhen, China. 518052
Service: info@ip-com.com.cn
Inquiry: marketing@ip-com.com.cn
Tel: +86-755-27653089