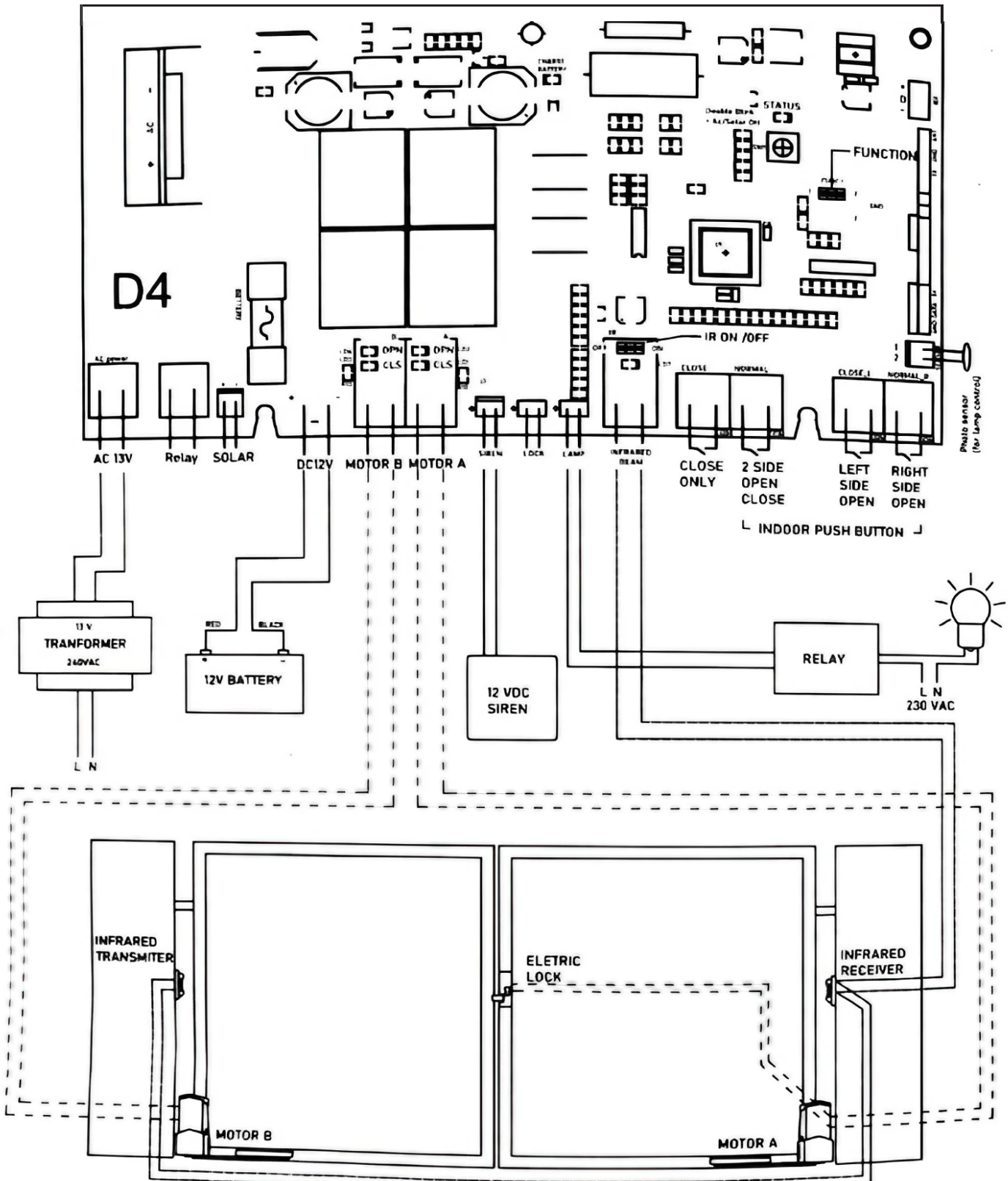


DNOR Turbo 880 Panel Diagram

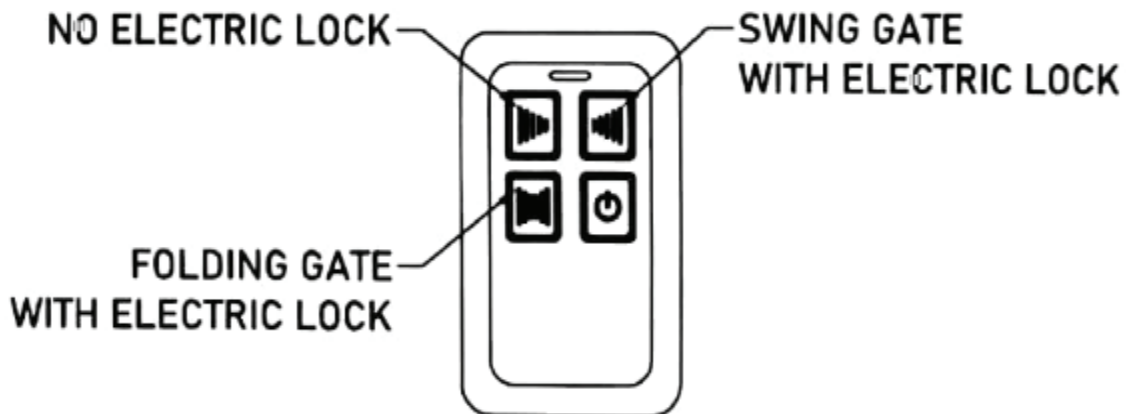
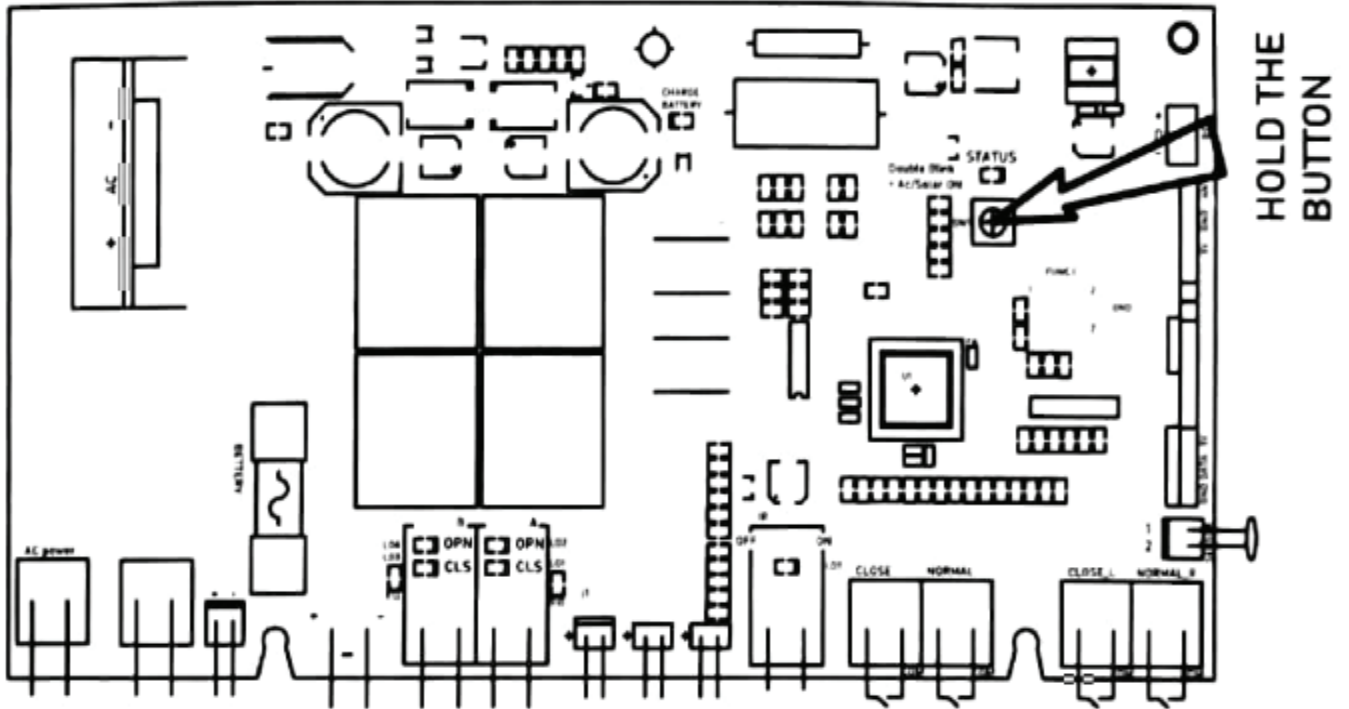


ATTENTION: The INFRARED BEAD is switched off when the gate is close. To ON it, open the gate or ARM the alarm.

FUNCTION: Function 2 for install only one unit motor.

DNOR Turbo 880 Panel Diagram

Pairing the remote control with the control panel



* HOLD THE CONTROL PANEL PROGRAM BUTTON AND PRESS THE REMOTE CONTROL BUTTON 1 TIME.