



IP-COM
World Wide Wireless

CPE3

2.4GHz 8dBi Outdoor CPE

CPE3

2.4GHz 8dBi Outdoor CPE

Product Description

CPE2 2.4GHz Outdoor CPE is designed to WISP CPE solutions and long distance wireless network solutions for video surveillance and data transmission. It features with 8dBi directional antenna to provide an efficient way to pick up and maintain a stable signal for a wireless network. Adopt of auto-bridging technology,two CPE can connect to each other automatically to make it easy to setup.



Key Features

- * 2.4GHz 11n 300Mbps
- * 8dbi directional antenna
- * IP65 waterproof enclosure
- * AP,Station,WISP operating mode supported
- * Up to 30 meters of flexible deployment with included PoE Injector

Product Features

Auto-bridge For Two Device

CPE3 adopts of auto-bridge technology,two cpe can connect to each other when you power on them face to face. It is very easy to setup.

8dBi Directional Antenna

CPE3 integrates with a 8dBi directional antenna to provide an optimized transmission quality.

Professional Outdoor Design

Equipped with IP65 waterproof enclouse and high quality hardware design, CPE3 can work in various weather conditions, such as sunshine, rainfall or extremely low/high temperature environment

Multiple Application Scenarios

Long-Distance Wireless Connection

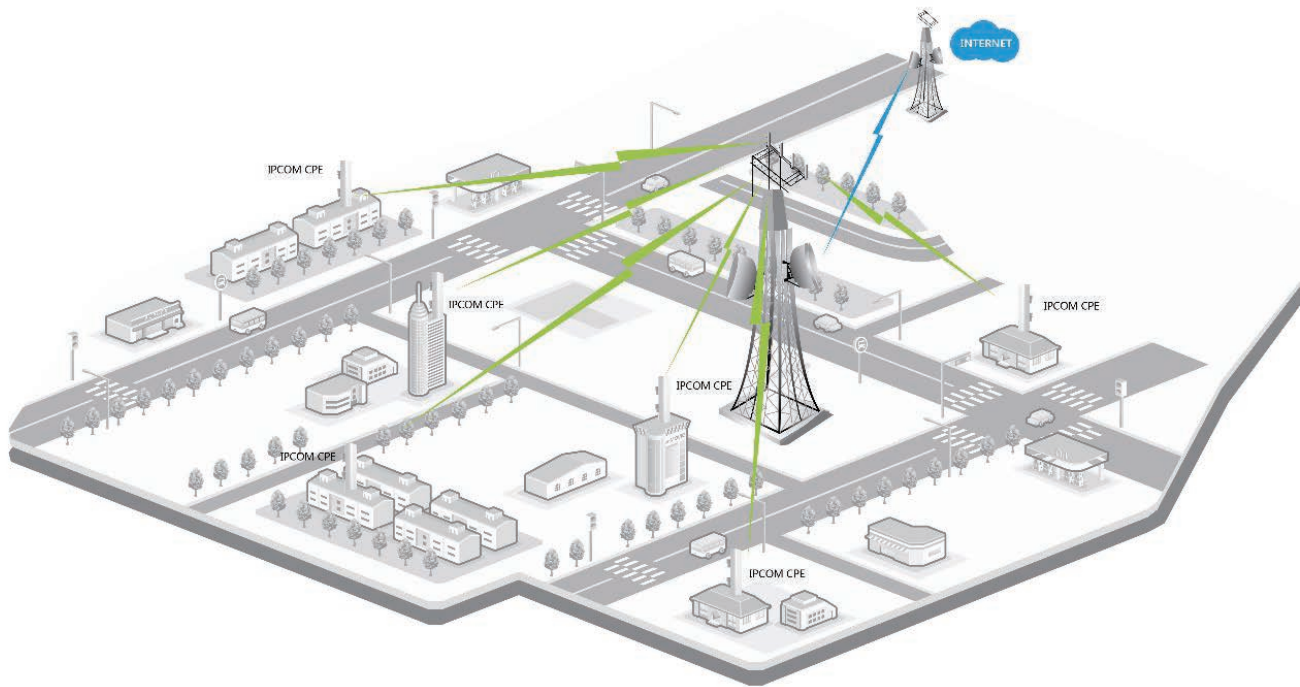
One work as AP mode and another work as Station mode to create a long distance wrieless connecton for video surveillance and data transmission.

WISP(Client+Router) Mode

Wirelessly connect to WISP station/hotspot to share Internet to local wireless and wired network.

Application Scenarios

CPE3 2.4GHz Outdoor CPE is designed to WISP CPE solutions and long distance wireless network solutions for video surveillance and data transmission. It features with 8dBi directional antenna to provide an efficient way to pick up and maintain a stable signal for a wireless network. Adopt of auto-bridging technology,two CPE can connect to each other automatically to make it easy to setup.



Product Specifications

Product Information	
Model	CPE3
Dimensions	190.35*80*67.5mm
Deployment	Pole Mount
Application Scenarios	Long range video surveillance,data transmission and WISP CPE
Hardware Features	
Frequency Range	2.4GHz
Maximum Wireless Rate	300Mbps
Waterproof Level	1*10/100Mbps PoE/LAN Port
Antennas Gain	8dbi
Antenna Beamwidth	Horizontal: 60° Vertical: 60°
Reset Button	1
Max Power Consumption	2.6W
Waterproof Level	IP65
LED indicator	PoE/LAN,WiFi,LED1,LED2,LED3
Power Method	DC or Passive PoE
Passive PoE	Passive power over ethernet via PoE/LAN (+4,5pins; -7,8pins) Voltage range: 9-12VDC
Receiver sensitivity	MCS0: -92dbm
	MCS7: -72dbm
Software Features	
Operating mode	AP/Station/WISP
Compliant Standards	IEEE 802.11b/g/n
Enable/Disable Wireless Radio	Support
SSID Hidden	Support
Wireless Client isolation	Support
SSID Isolation	Support
Client Limitation For SSID	Support
Wireless Access Control	Support
Weak Signal Client Limitation	Support
Transmission Power	Adjustable power by 1dBm
WMM Capable	Support
APSD Capable	Support

Product Specifications

Wireless Security	64/128 WEP,WPA-PSK,WPA2-PSK,WPA&WPA2-PSK,WPA,WPA2
Transparent Bridge	Support
VLAN Tagging for SSID	Support
DHCP Server	Support
VPN Pass-Through	PPTP,L2TP
Remote Web access	Support
Schedule Reboot	Support
Page Timeout	Support
Ping Watchdog	Support
Dyndns	Support
Network Diagnoses	Ping, Traceroute, Signal Scan
Time&Date Setting	Support
Firmware upgrade	Support
Backup/Restore Configuration	Support
Username Managerment	Support
System Log	Support
Managed By Controller	PC Software -- CPE Controller
Others	
Package Contents	1*2.4GHz 8dBi Outdoor CPE 1*Power Adapter 1*PoE Injector 2*Plastic Staps 1*Quick Installation Guide
Operating Temperature	-30 C ~ 55 C
Storage Temperature	-40 C ~ 70 C
Operating Humidity	10%~90% non-condensing
Storage Humidity	10%~90% non-condensing
Default login IP	192.168.2.1
Default Login Username	admin
Default Login Password	admin
Certifications	FCC/CE/RoHS

IP-COM
World Wide Wireless

IP-COM NETWORKS CO.,LTD.

Tower E3, No.1001, Zhongshanyuan Road,
Nanshan District, Shenzhen, China. 518052
Service: info@ip-com.com.cn
Inquiry: marketing@ip-com.com.cn
Tel: +86-755-27653089