

# AC SLIDING GATE MOTOR

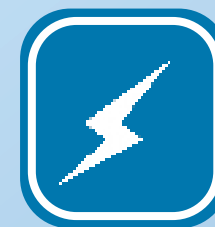
## ALBANO - L200



### FEATURE



Suitable for gate from 400kg - 1000kg



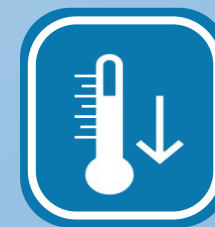
Electromechanical automation 240V



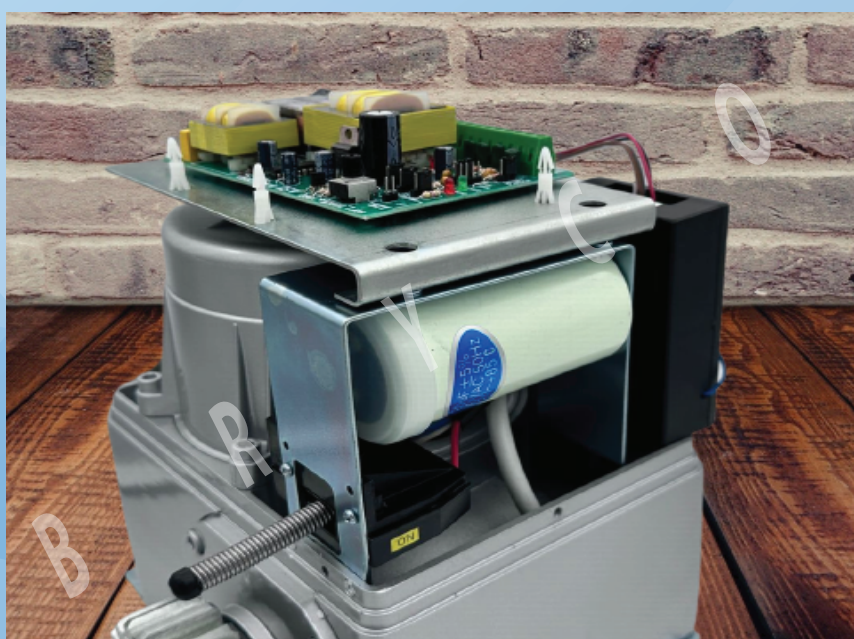
High quality electronic and mechanical components



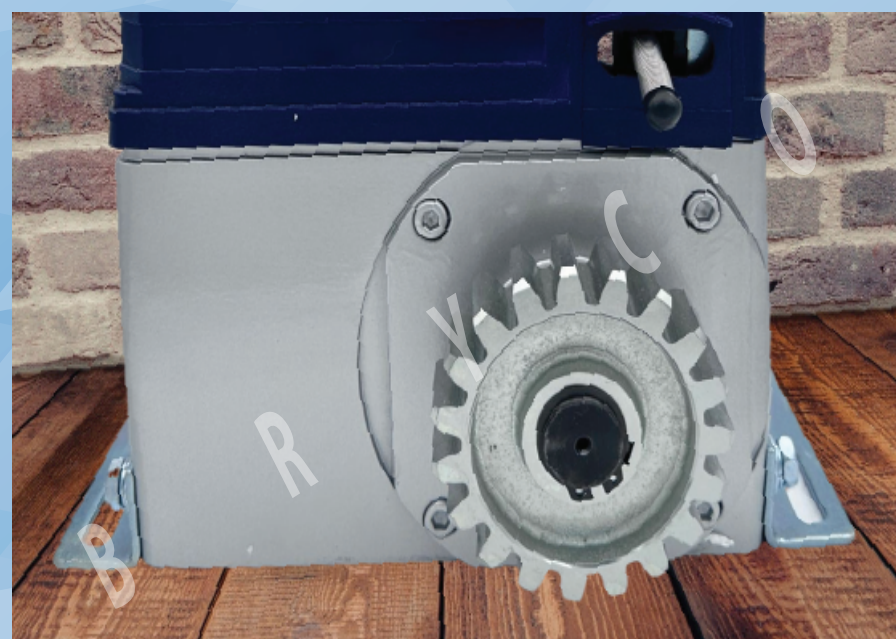
Safety clutch system to prevent injury or damage



Overheat & overload dual protection



Fully built-in compact design

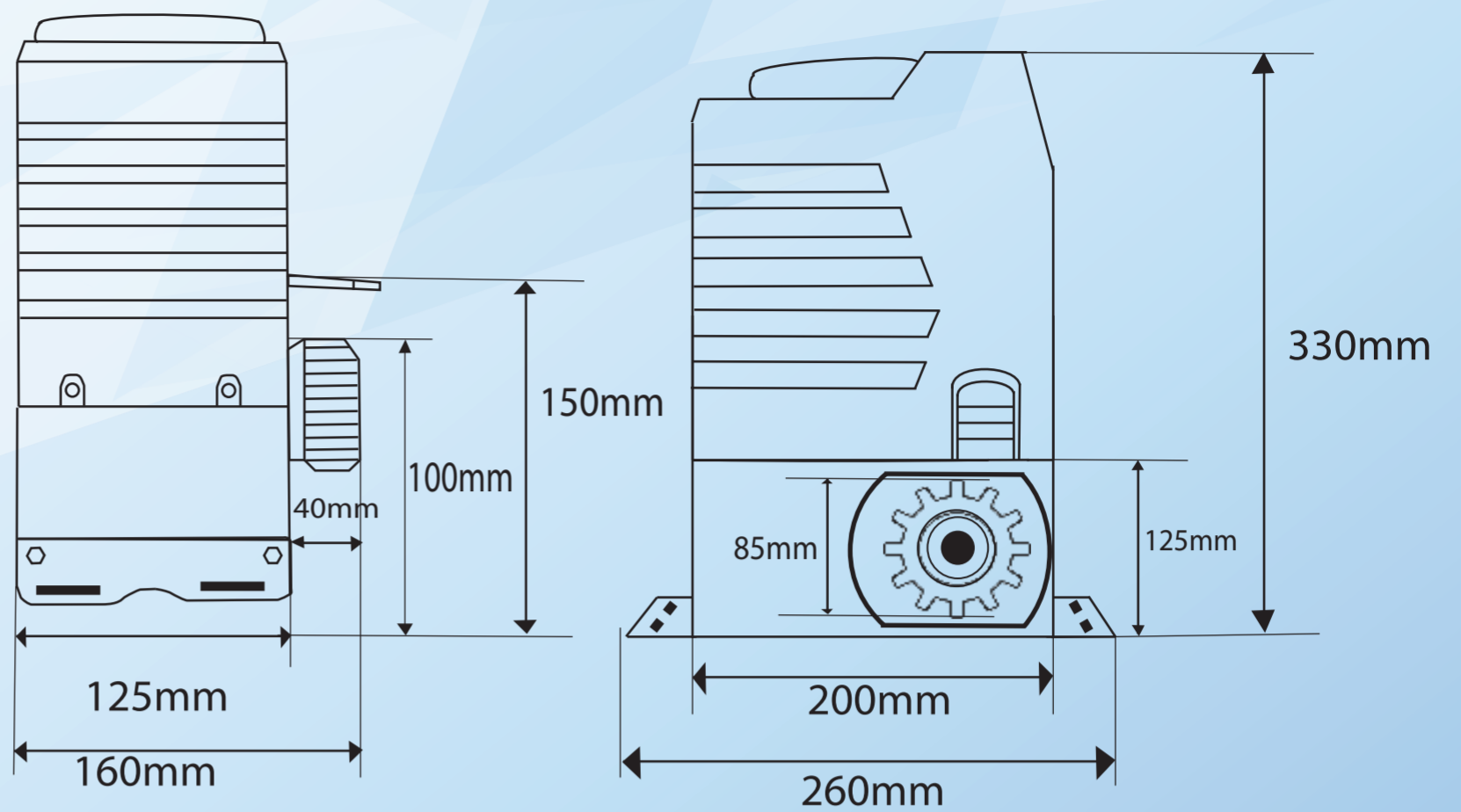


Metal driving gear with 19 teeth  
Dimension : 85 mm



Fast and easy unlock device  
with release key

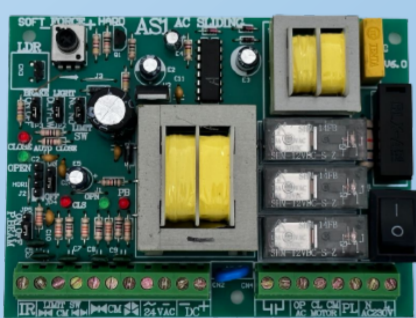
## DIMENSION



## SPECIFICATIONS

Operating Voltage	AC 220-240V
Output Power	600W
Current	5A Max
Motor Rotation Speed	1400 RPM
Max. Weight of Gate	1,000 kg
Linear Speed	13m/min
Safety Cut Off / Auto Reverse	Electronic Load Surge Detector
Safety Limit Timer	Yes
Driven Type	Gear Driven

## ACCESSORIES



AS1 Control Panel



Remote Control set  
1x Receiver , 3x Transmitter



Capacitor 20UF  
(Sliding Gate Use)



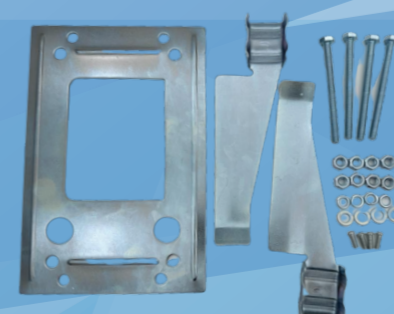
Limit Switch c/w Spring



Metal Gear



Emergency Release  
Allen Key x 2pcs



Spare Parts set  
Mounting Plate, Screw ,  
Nuts , Washers and  
Limit Switch Stopper



Gear Rack x1 pack  
4 meter gear rack  
with screw and nuts