



**BRYCO**

# **ALARM SYSTEM ACCESSORIES**

# ACCESSORIES



## INDOOR SIREN

Internal Siren  
DC12V Powered



## VVS RSL

Strobe Light (RED)  
DC12V Powered



## MS30W

External Siren Horn  
12VDC powered 30W



## VVS MSB

Metal Siren Box (Empty)  
122(D) x 195(W) x 225(H) mm



## TAMPER SWITCH

Use in External Siren  
Box / Enclosure Box



## JB

Wiring Junction Box  
White Color  
35(D) x 30(W) x 18(H)mm



## ALBOX

Alarm Panel Brown Box  
300(H) x 280(L) x 85(W)  
mm

# ACCESSORIES



## TRANSFORMER

Alarm Transformer  
2A , 16.5VAC



## BATTERY

DC12V 7AH  
Backup Battery



## ASD002

Smoke Detector Sensor

- Cable connection : 12V+, 12V-
- NC/NO (Selectable)
- Twin LED for 360° view



## ASD003

Smoke & Heat  
Detector sensor

- 9-16VDC
- NC/NO alarm output
- Automatic reset
- SMT technology
- Anti-EMI
- FRI interference
- Trigger alarm : 57 °C

# MAGNETIC CONTACT



## MMC38

Miniature Magnetic Contact (White)  
Max 10mm detection distance



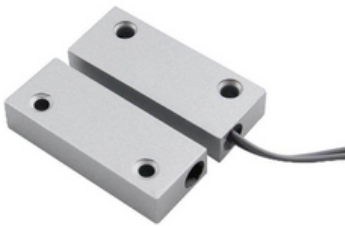
## CMC-100

Small Conceal Magnetic Contact (White)  
Max 10mm detection distance



## MMC002

Big Magnetic Contact (White)  
Max 25mm detection distance



## AMC003

Heavy Duty Magnetic Contact (Sliver Grey)  
Max 42mm detection distance



## EMC-1008(B)

Magnetic Contact (Brown)  
Max 10mm detection distance



## CMC-1008(B)

Small Conceal Magnetic Contact (Brown)  
Max 10mm detection distance



## MSQ5

Vibration Sensor

- Adjustable sensitivity
- Gold plated contacts for superior quality



## MOC55

Floor Roller Shutter Magnetic Contact (Metal)



## EL-810R(ADJ)

Upper Roller Shutter Magnetic Contact