



BRYCO

ALARM SYSTEM ACCESSORIES

ACCESSORIES



INDOOR SIREN

Internal Siren
DC12V Powered



VVS RSL

Strobe Light (RED)
DC12V Powered



MS30W

External Siren Horn
12VDC powered 30W



VVS MSB

Metal Siren Box (Empty)
122(D) x 195(W) x 225(H) mm



TAMPER SWITCH

Use in External Siren
Box / Enclosure Box



JB

Wiring Junction Box
White Color
35(D) x 30(W) x 18(H)mm



ALBOX

Alarm Panel Brown Box
300(H) x 280(L) x 85(W) mm



TRANSFORMER

Alarm Transformer
2A , 16.5VAC



BATTERY

DC12V 7AH
Backup Battery

ACCESSORIES



BRK30I

I Stainless Steel Bracket
(30cm)
300 x 80 x 80 mm



BRK50I

I Stainless Steel Bracket
(50cm)
500 x 80 x 80 mm



BRK50J

J Stainless Steel Bracket
(50cm)
500 x 80 x 80 mm



AQS001

All-In-One Outdoor Siren
High intensity Xenon
flashing strobe light (blue)

- Built-in Tamper switch
- Voltage: 12VDC, 300mA
- Siren index: 110dB
- Size: 210L x 110W x 70H mm



ASD002

Smoke Detector Sensor

- Cable connection : 12V+, 12V-
- NC/NO (Selectable)
- Twin LED for 360° view



ASD003

Smoke & Heat
Detector sensor

- 9-16VDC
- NC/NO alarm output
- Automatic reset
- SMT technology
- Anti-EMI
- FRI interference
- Trigger alarm : 57 °C

MAGNETIC CONTACT



EMC-1008

Miniature Magnetic Contact (White)

Max 10mm detection distance



CMC-100

Small Conceal Magnetic Contact (White)

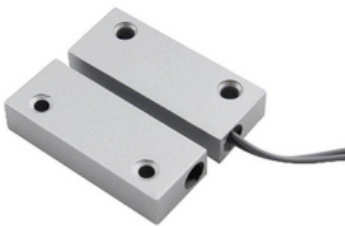
Max 10mm detection distance



MMC002

Big Magnetic Contact (White)

Max 25mm detection distance



AMC003

Heavy Duty Magnetic Contact (Sliver Grey)

Max 42mm detection distance



EMC-1008(B)

Magnetic Contact (Brown)

Max 10mm detection distance



CMC-1008(B)

Small Conceal Magnetic Contact (Brown)

Max 10mm detection distance



MSQ5

Vibration Sensor

- Adjustable sensitivity
- Gold plated contacts for superior quality



MOC55

Floor Roller Shutter Magnetic Contact (Metal)



EL-810R(ADJ)

Upper Roller Shutter Magnetic Contact